

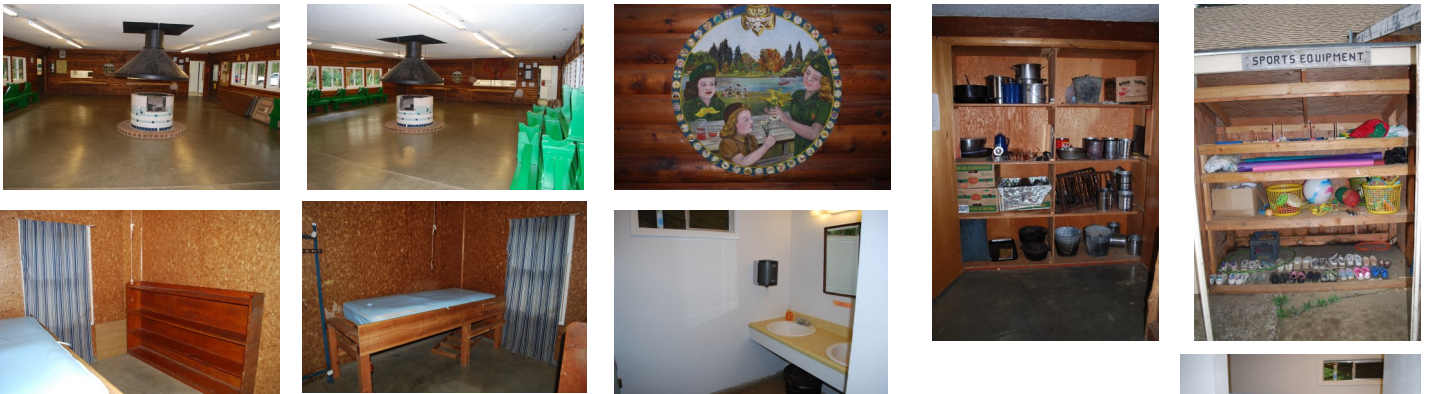


## Lodge

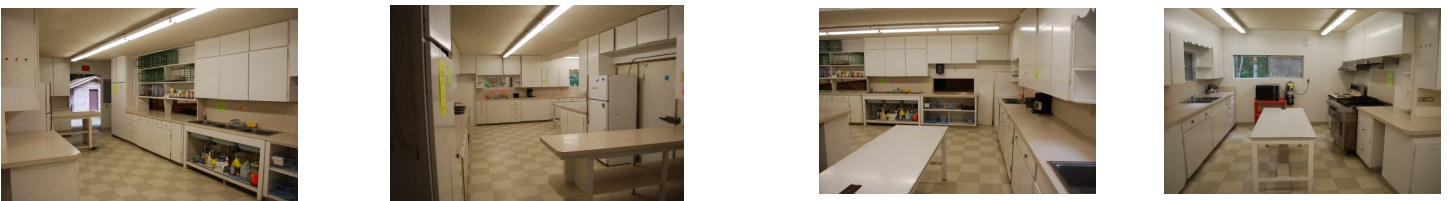
Electric kitchen with dishes and cooking equipment, refrigerator and freezer. Dining area with central fireplace and electric heat. Outdoor fire circle. Overnight capacity is 40. Day use or dining capacity is 80.



Exterior photos of the lodge, the front faces the camp road and the rear faces the river. Main room is large and contains the central fire place and storage for playground equipment, outdoor gear locker and volunteer lead day camp.



Two storage/sleeping areas in the back of the lodge usually used for the camp cooks. The restrooms are also in the back of the building and have flushing toilets and hot and cold running water.



Large camp kitchen with serving equipment. Range, refrigerator and industrial cooler, coffee maker and microwave. No dishwasher. Play area and flag pole are located behind the Lodge.



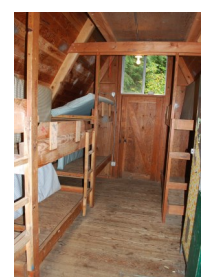
## Alder Hill Cabins

These three cabins each have their own outdoor gear locker. This unit has electric lights and electric heat, bunks with mattresses, fire circles and water. The cabins share the Alder Hill shower house with the A-frames along with the Alder Hill program shelter. The Alder Hill Amphitheater is close by.



## Alder Hill A-Frames

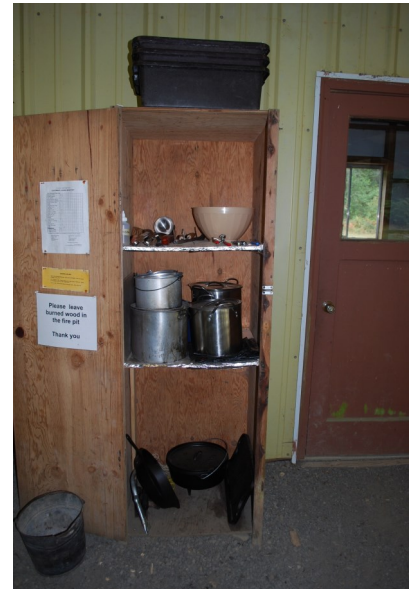
3 A-frame chalets, has eight bunks, set in a half-circle for a community feel. All A-frames are close to each other and centered around the fire-circles. Water, fire circles and picnic tables in unit. Gear locker's with outdoor equipment stored inside each A-frame. Shares the Alder Hill shower house and Alder Hill program shelter with the Alder Hill Cabins. Wood for the fire circles is stored on site in the shed. The Alder Hill Amphitheater is nearby.





## Alder Hill Program Shelter

The Alder Hill Program Shelter has a fireplace, tables with benches, picnic tables, outdoor gear locker, water and a small cook stove. This is shared with the cabins and a-frames in the Alder Unit. The Alder Hill Shower House is close by as well as the Alder Hill Amphitheater.



## Alder Hill Shower House

The Shower house has 4 sinks and mirrors located at the entrance to the building but are outside. Electric lights and hot and cold running water. 4 stall and a shower on each side of the shower house. The shower house is shared between all the cabins, a-frames and anyone tent camping in the Alder Hill Unit.





## Roost

The Roost is across the road from the Lodge and the singing tree. This unit is not wheelchair accessible. The Roost is one large room, bunks with mattresses and electric lights. Gear locker and few chairs. There isn't electric heat in this unit. The shower house is located in the main camp. Roost Capacity is 8.



## Fir



This unit is six open air cabins, two that are wheelchair accessible, bunks with mattresses. All the cabins surround the fire circle and water is close to the fire circle. Pit latrine for restroom. Capacity: 36





## **Fir Program Shelter**



The Fir Program Shelter has electricity, water, 3 burner propane stove, fireplace, fire extinguisher and gear locker with unit equipment. The shelter is wheelchair accessible.

## **Shower House**

Wheelchair accessible. Community style showers, and flush toilets. Located in front of the Lodge.



## Points of Interest



**Alder Hill Amphitheater:** Campfire area with split log benches between the cabins and A-frames.



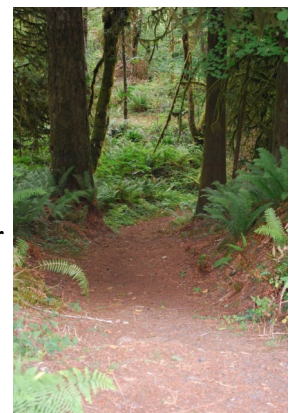
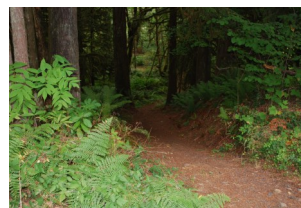
**The Chapel** is located on the Lookout trail between Alder Hill and the creek bridge.

**Lookout Trail:** A loop trail with scenic overlook of Mill Creek and the Lodge.

**Mill Creek:** Mill Creek runs through camp and creek wading is permitted with adult supervision and Basic Water Rescue Certification, First Aid, CPR.



**Loop Trail:** this trail may be accessed from the Lookout trail.



**Rollercoaster Trail:** this trail is located just off the road between Fir and Alder Hill. Trail is twisty and many changes in elevation.



**The Singing Tree:** next to the main camp shower house and the lodge. There is a bench sit on.

**Main Campfire Amphitheater:** Benches to seat 100 and fire circle next to Mill Creek create a scenic campfire area.

